



**cranium**  
HEALING SPACES



every piece of furniture plays a role.  
in high-risk care, that role is non-negotiable.



**THE ROOMS WHERE PEOPLE RECOVER  
CARRY CONSEQUENCES THAT  
CONVENTIONAL FURNITURE WAS  
NEVER DESIGNED FOR.**

Psychiatric wards, mental health units, correctional facilities, and residential care environments share the same gaps: ligature points go unaddressed, surfaces fail under infection control protocols, and structures that appear solid on a specification sheet can fail under the kind of stress these spaces regularly produce.

**Cranium was founded to close that gap.**

**FOUNDED ON THE BELIEF THAT THE SPACES WHERE PEOPLE HEAL DESERVE TO BE DESIGNED WITH THE SAME CARE AS THE TREATMENT DELIVERED INSIDE THEM**

When Cranium was founded in South Africa in 2018, no specialist furniture supplier existed for the specific demands of behavioural and psychiatric care in the region. Products were borrowed, inadequately, from general healthcare catalogues.

We built Cranium to fill that gap, and every product we have made since is held to the same brief: designed specifically for these environments and the people inside them



about cranium



## DESIGNED FOR ENVIRONMENTS WHERE EVERY DETAIL MATTERS

The spaces where people recover carry real consequences. Furniture in psychiatric wards, behavioural health units, and correctional facilities has to do something conventional furniture cannot: eliminate risk while the person using it never feels like a subject of containment.

That tension is the brief we design to. Every Cranium product starts with an honest account of the environment it will enter: the ligature points to reduce, the stash cavities to seal, the surfaces that need to hold up under institutional cleaning and deliberate stress.

Design works outward from there. Nature-inspired forms, muted palettes drawn from the natural world, and seamless construction produce spaces that feel considered and calm, meeting the therapeutic brief alongside the safety one.

Because we manufacture entirely in-house, from concept and prototyping through rotomoulding, upholstery, and quality control, every product that leaves our facility was designed specifically for these environments and the people inside them.

The image shows three chairs from the Cranium product line, each in a different color: blue, grey, and white. They are arranged in a row, with the blue chair on the left, the grey chair in the middle, and the white chair on the right. The chairs have a modern, rounded design with a high back and a wide seat. The background is a gradient of light to dark grey.

design philosophy

## KEY FEATURES

## mindfully designed, engineered for safety

**ANTI-LIGATURE DESIGN**

Rounded corners, no exposed anchor points, and no protrusions reduce ligature risk and the opportunity for self-harm throughout.

**IMPACT RESISTANCE**

Rotomoulded LLDPE construction produces a one-piece shell that holds up under deliberate stress and daily institutional use.

**THERAPEUTIC COLOUR PALETTE**

Colours drawn from the natural world, selected for what each tone contributes to calm, therapeutic spaces.

**ANTI-STASH DESIGN**

Sealed construction eliminates the crevices and cavities that create concealment risks in high-acuity care environments.

**WATERPROOF SURFACES**

Non-porous, continuous shells meet infection control standards and withstand institutional cleaning chemicals without degrading.

**MATERIAL OPTIONS**

Available in LLDPE, upholstery, woodgrain, and HPL across applicable product categories.

**WEIGHTED STABILITY**

Products can be sand-filled or floor-anchored to prevent lifting, repositioning, or use as a weapon.

**SPECIFICALLY FORMULATED**

UV protection, flame retardancy, and impact resistance built into every product.

**ERGONOMIC DESIGN**

Every form is considered for how it will be used, and misused, in high-acuity environments.

# everything you need to specify a complete care environment, across eight product ranges



**TAPER RANGE.**

Seamless rotomoulded LLDPE across a complete ward, specified from a single system. Engineered so there is nowhere in the room for risk to hide.

PAGE 7



**NATURA SERIES.**

Nature-inspired surface texture and therapeutic colour, built to full safety specification for high-risk care environments.

PAGE 14



**ARAVA MODULAR RANGE**

Soft seating modular couch and ottoman configurations for communal and therapeutic spaces, arrangeable to suit any layout and supervision requirement.

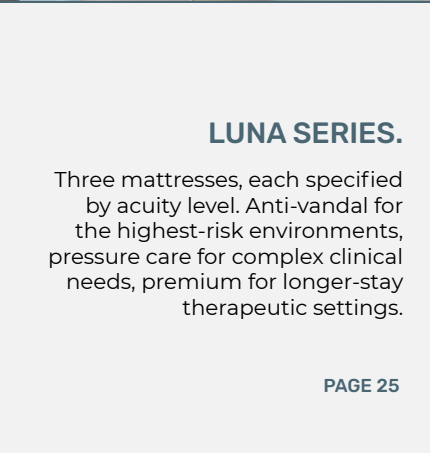
PAGE 22



**HARVEST RANGE.**

From the dining room to the waiting area. Steel, stainless steel, and timber options for environments where supervision and security are the primary brief.

PAGE 27



**LUNA SERIES.**

Three mattresses, each specified by acuity level. Anti-vandal for the highest-risk environments, pressure care for complex clinical needs, premium for longer-stay therapeutic settings.

PAGE 25



**SOFT SUPPORT SEATING**

Institutional-grade softness for sensory rooms and therapeutic lounges. Safe, durable soft seating for care environments where comfort and containment both matter.

PAGE 33



**CALMADILLO RANGE**

Designed for a single, critical moment: de-escalation. A calming unit that delivers a containment experience through environment rather than physical restraint, for the moments when setting determines outcome.

PAGE 35



**ACCESSORIES**

The layer that completes a fully safe space. Anti-ligature protective covers for televisions and artwork, removing the final hazard points so the specification holds all the way to the wall.

PAGE 37



# taper range

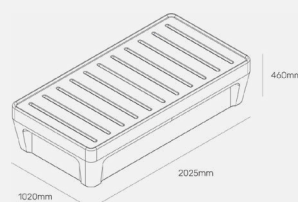
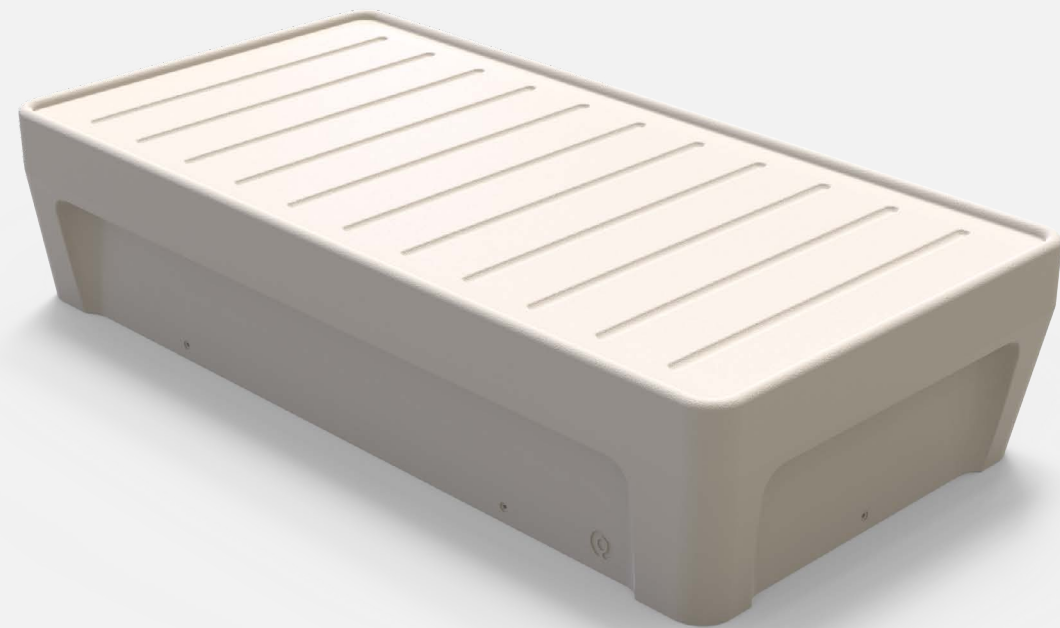
Cranium's founding furniture system, built specifically for the hazards of acute psychiatric and high-acuity behavioural health environments. Every piece is rotomoulded from seamless LLDPE polymer, eliminating the joins, sharp edges, and protrusions that standard furniture leaves behind.

## PRODUCTS IN THIS RANGE

- Mental Health Bed
- Restranium Mental Health Bed
- Dining Chair
- Chair with Arms
- Lounging Chair
- Tub Chair
- Stool
- 2 and 4 Tier Shelf
- Realeaux Tables

## CR-BD2 mental health bed

A single-form sleeping platform for acute psychiatric environments. No joins, no exposed edges, no anchor points. Sand-fillable for weighted stability; floor-anchorable for maximum security.

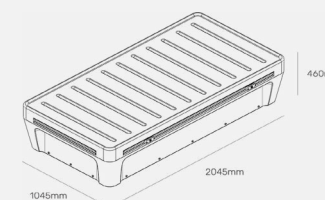




CR-BD2-R

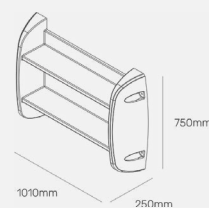
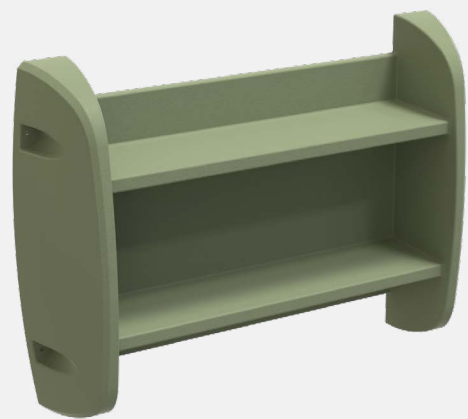
## restranium™ mental health bed

The Mental Health Bed with an integrated adjustable restraint system. Sliding rails and multiple anchor configurations allow clinically prescribed restraint, built directly into the bed structure.



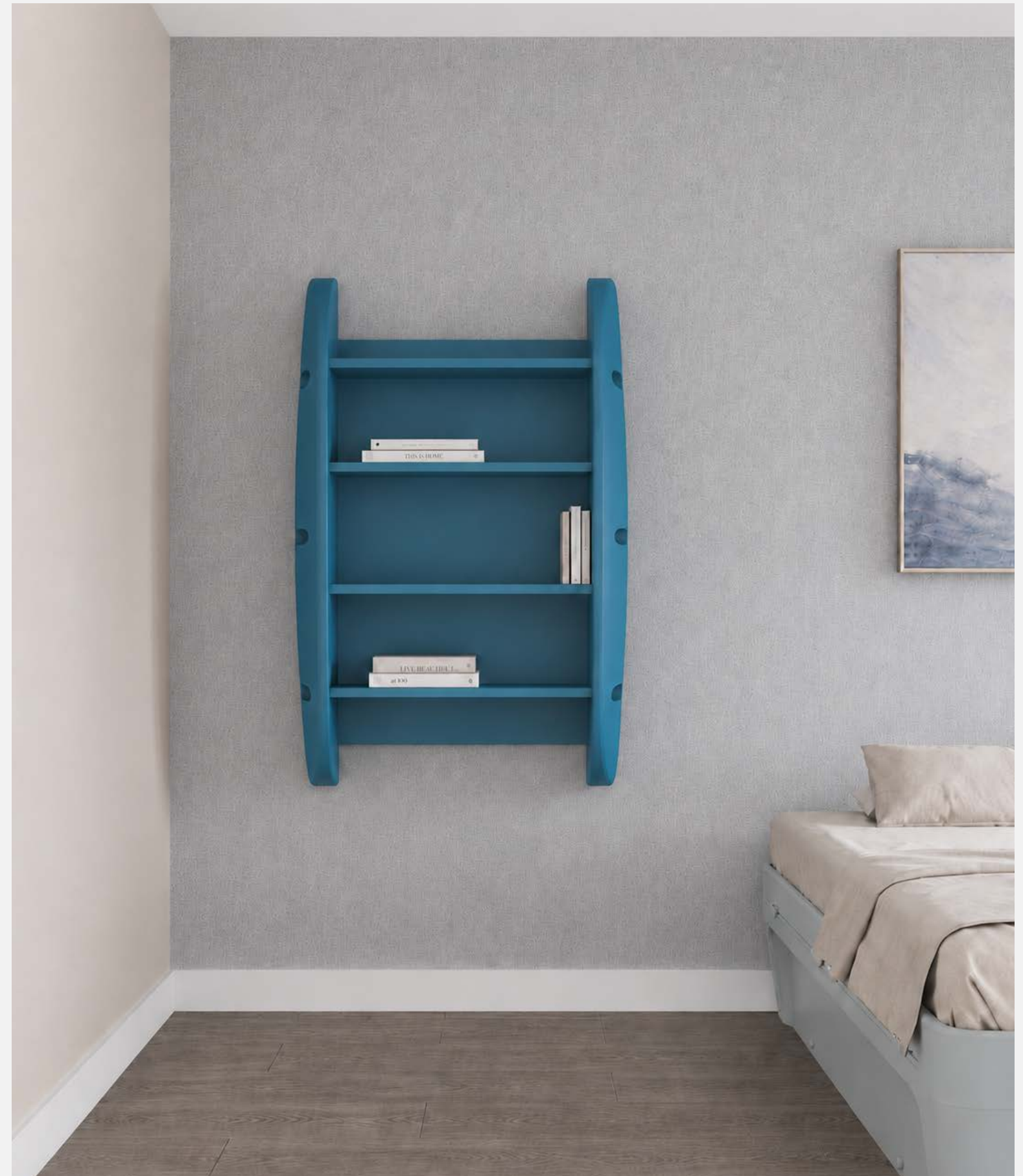
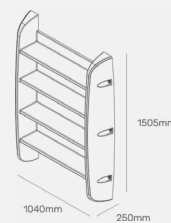
**CR-2T**  
2-tier shelf

A wall-mounted two-tier shelving unit for psychiatric ward patient rooms. No exposed hardware, no protrusions, seamless rotomoulded LLDPE construction throughout.



**CR-4T**  
4-tier shelf

A four-tier wall-mounted shelving unit for higher-storage ward configurations. The same seamless LLDPE construction, wall-anchored with tamper-resistant fixings.





## CR-ST stool

A rotomoulded LLDPE stool, sand-fillable for weighted stability. Designed to pair with the floor-mounted desk as a complete workspace specification for residential care environments.



### TAPER RANGE SEATING

Four options for every communal and therapeutic space in a psychiatric ward. All pieces are rotomoulded from seamless LLDPE, sand-filled for weighted stability, and free of the exposed fixings, sharp edges, and anchor points that create risk in high-acuity care environments.

**CR-TC**  
dining chair



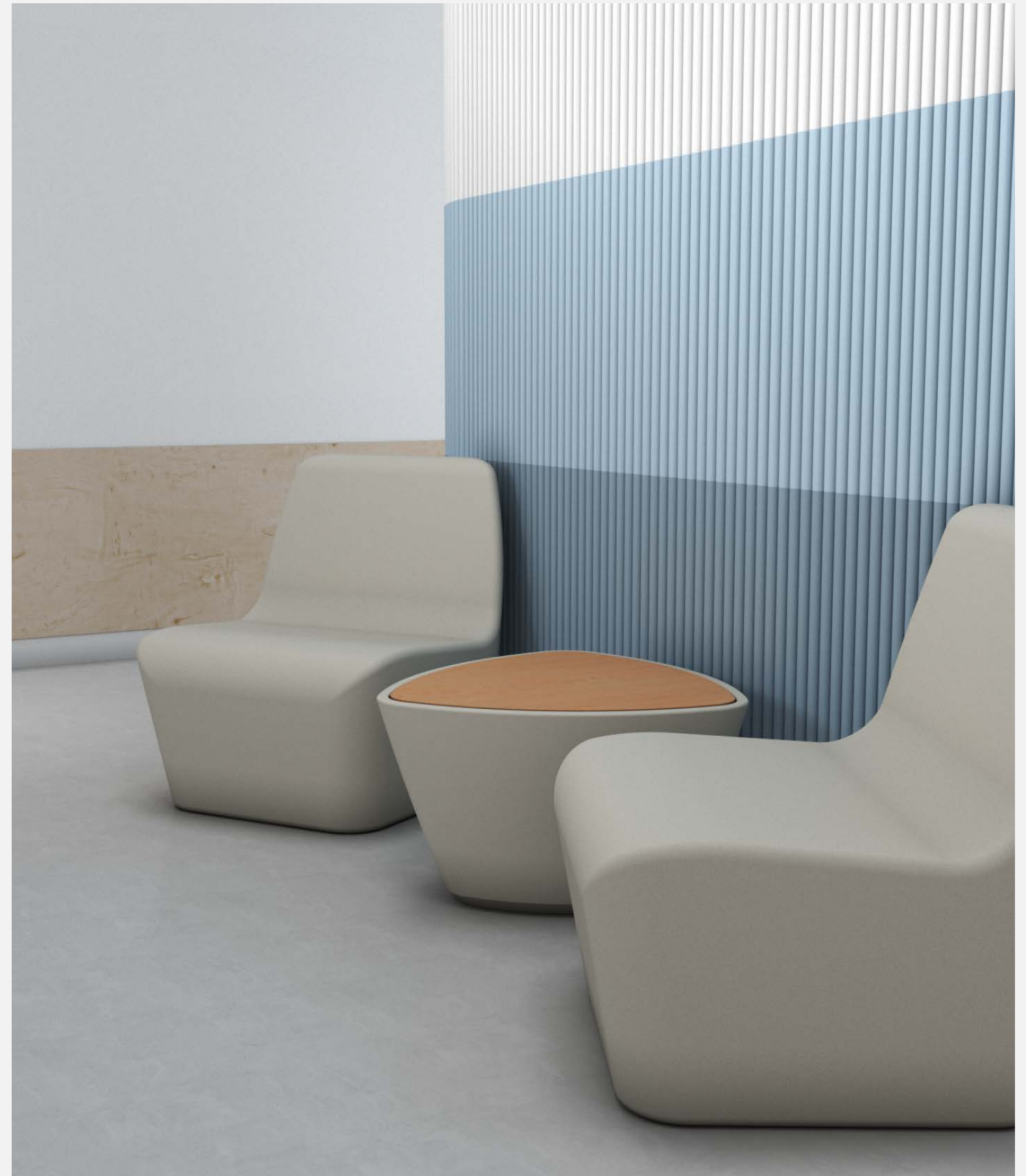
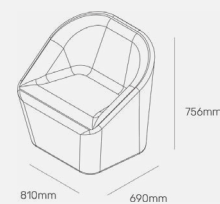
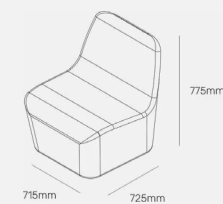
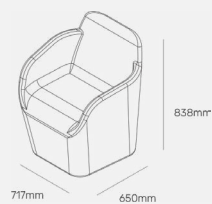
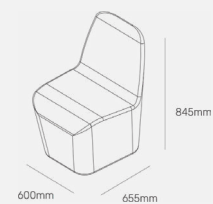
**CR-TC2**  
dining chair with arms



**CR-TCL**  
lounging chair



**CR-TUC**  
tub chair





### realeaux table

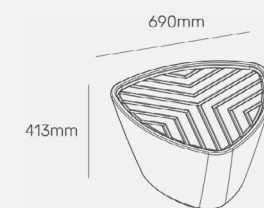
A larger Realeaux configuration for communal dining and multi-use environments. Same seamless base construction, in a footprint suited to group seating.

### realeaux table with HPL

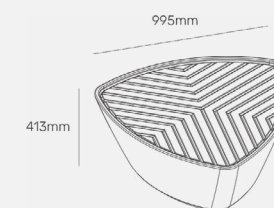
The Reuleaux Large with a high-pressure laminate top for high-use communal dining. Same institutional safety specification; HPL surface for environments with elevated hygiene requirements.



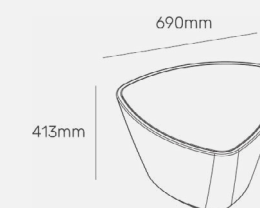
CR-RCT1



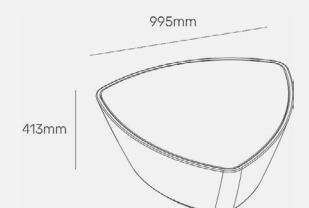
RC-RCT-2



CR-RCT1-HPL



CR-RCT2-HPL



# natura series

Drawn from the patterns of rippling water, wind-shaped sand, and plant life, the Natura Series brings nature-inspired texture and therapeutic colour to full anti-ligature LLDPE construction. For residential psychiatric and longer-stay care environments where calm is part of the brief.



Natura is not just inspired by nature, it's built to reflect it. Durable. Ligature-resistant. Human-centered.

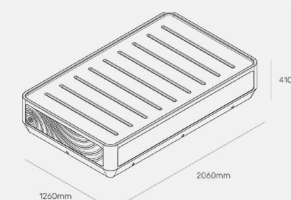
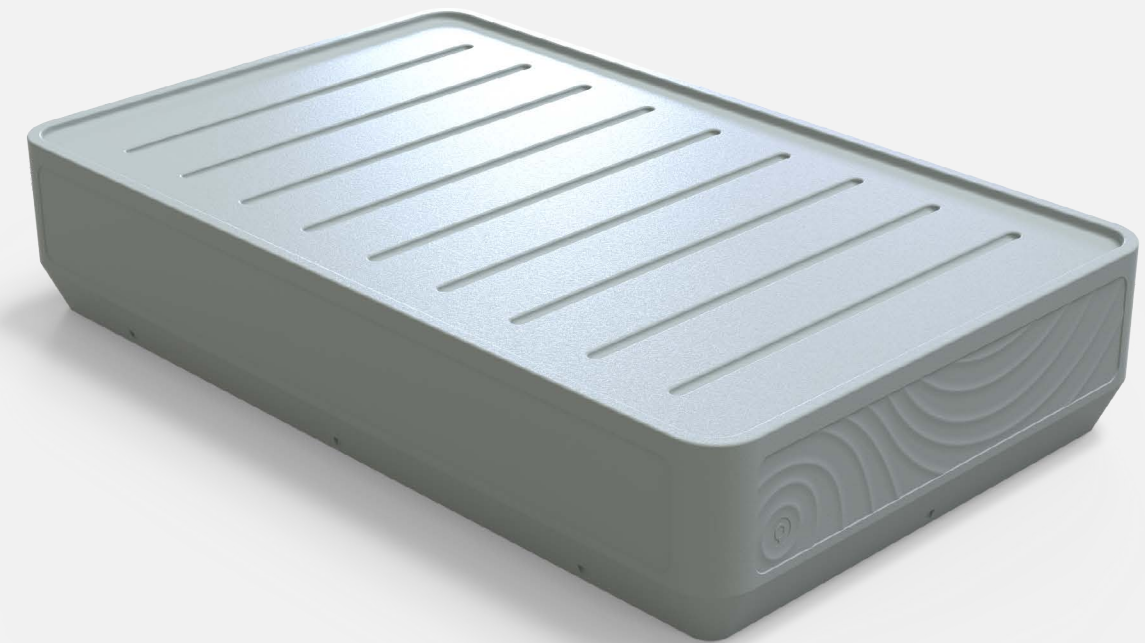
## PRODUCTS IN THIS RANGE

- Wide Bed
- 2-Tier Bedside Locker
- Helix Table
- Double Helix Table
- Cupboard 4 and 6 Compartments
- Wardrobe 5 Compartments
- Wardrobe with Clothing Rail
- Floor Mounted Desk



CR-BD-NW  
natura wide bed

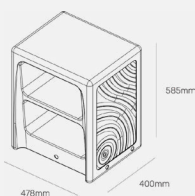
A rotomoulded LLDPE bed with nature-inspired surface texture for recovery-focused psychiatric environments. Specified at 1200mm wide, it offers a more spacious alternative to standard mental health beds without compromising safety. No exposed rails, no stash points, no surfaces that create ligature opportunity.



CR-OBC2-N

## 2-tier bedside locker

A two-tier bedside storage unit designed as a coordinated pair with the Natura Wide Bed. Seamless LLDPE construction with secure tamper-resistant access and no exposed fixings.





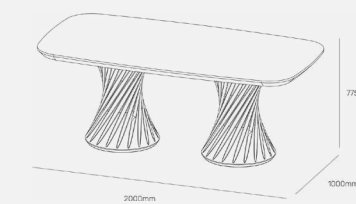
CR-DRT-H-DBL  
helix table

A round dining table with a nature-textured LLDPE sand-filled base and MDF laminate top. Tamper-resistant construction, stable under institutional use.



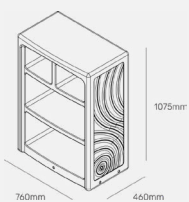
CR-DRT-H  
double helix table

A larger round table for communal dining rooms with higher seating capacity. Same Helix construction and safety specification, in a larger footprint for group dining environments.



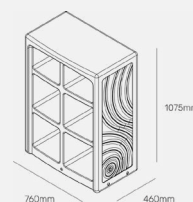
**CR-CUP-4**  
cupboard four  
compartments

A wall-fixed four-compartment storage unit for smaller patient room configurations. The same LLDPE construction and safety specification as the 6-compartment variant.



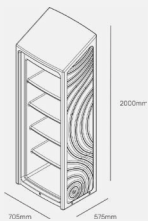
**CR-CUP-6**  
cupboard six  
compartments

A wall-fixed six-compartment storage unit for patient rooms in residential psychiatric facilities. Seamless LLDPE construction, no exposed fixings, open shelving for easy inspection.



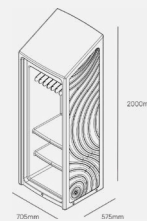
**CR-WRD-1**  
wardrobe five compartments

A full-height five-compartment wardrobe for residential psychiatric bedrooms. Enclosed LLDPE construction, floor-anchorable, no internal ligature points or exposed hardware.



**CR-WRD-2**  
wardrobe with clothing rail

A wardrobe with an integrated clothing rail for longer-stay residential care environments. Same LLDPE construction, with secure rail mounting and contained interior.

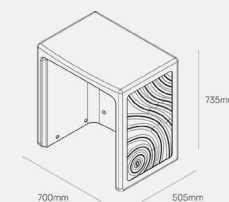
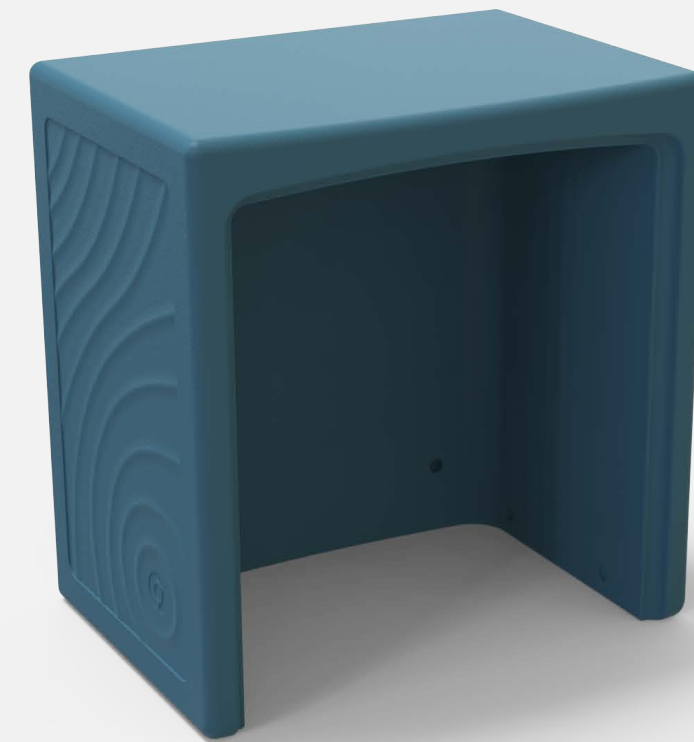




CR-FD

# Floor mounted desk

A floor-anchored desk surface for patient bedrooms and supervised study environments. Secured to the floor, it reduces the risk of furniture being lifted, repositioned, or used as a weapon.



# arava modular range

Some spaces in a care facility should feel genuinely comfortable. The Arava Modular Range brings flexible, upholstered soft seating to communal and therapeutic environments, configurable to suit the room and built to full institutional specification.

## PRODUCTS IN THIS RANGE

- Couch Straight Piece
- Couch Corner
- Couch Ottoman
- Modular Ottoman
- Round Ottoman
- Oblong Ottoman

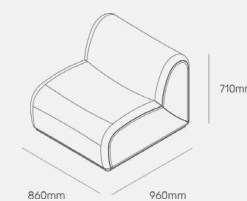


## modular couch system

A configurable soft seating system for communal and therapeutic environments. Straight sections, corner pieces, and integrated ottomans combine to form L-shape and U-shape layouts suited to supervision requirements and room configurations. Institutional upholstery and impact-resistant bases throughout.

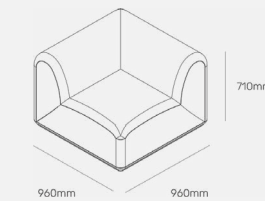
CR-MDL-STR

modular couch  
straight



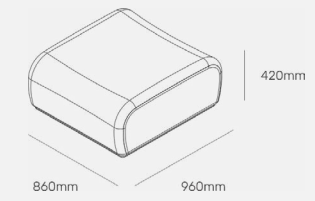
CR-MDL-CNR

modular couch  
corner



CR-MDL-OT

modular couch  
ottoman





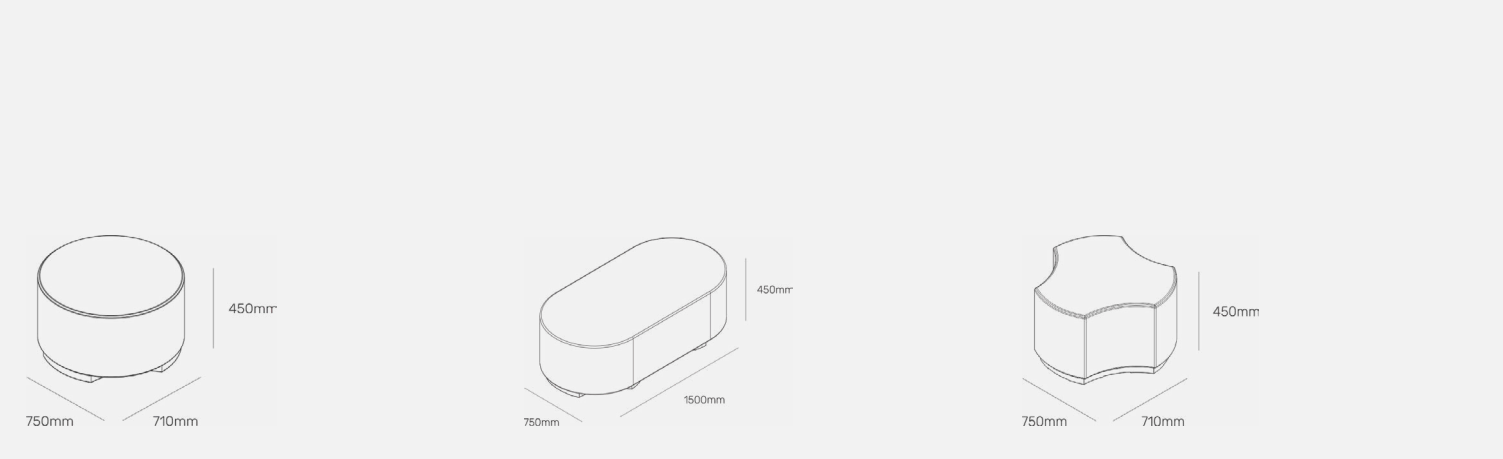
# ottomans

A range of low seating and surface pieces for sensory rooms, therapeutic lounges, and communal spaces. Available in round, oblong, and modular forms to suit different layout needs. Smooth enclosed forms with no exposed edges or grab points. Specifies independently or pairs with the modular couch system.

**CR-OT-R**  
round ottoman

**CR-OT-OB**  
oblong ottoman

**CR-MDL-OTM**  
modular ottoman



# luna series

Three mattresses, each specified by acuity. The Luna Series covers every care environment from the most acute psychiatric ward to longer-stay residential settings, with a purpose-built sleep surface for each.

## PRODUCTS IN THIS RANGE

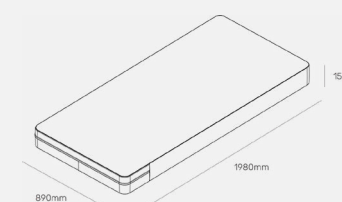
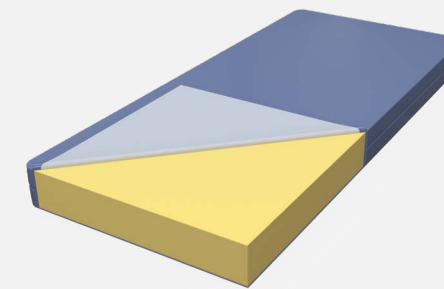
- Anti-Vandal Mattress
- Pressure Care Mattress
- Premium Mental Health Mattress



CR-MT-w-PR

anti-vandal  
mattress

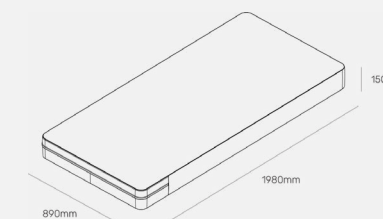
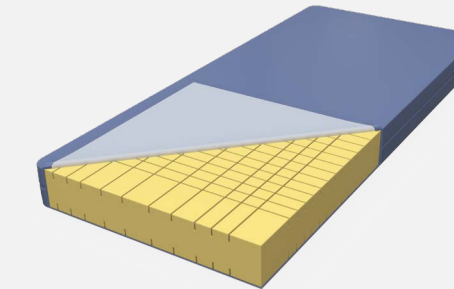
A high-resistance mattress for the most acute psychiatric environments. Designed to resist intentional damage while meeting institutional infection control standards.



CR-PSY-PSC

pressure care  
mattress

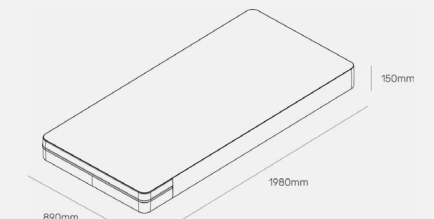
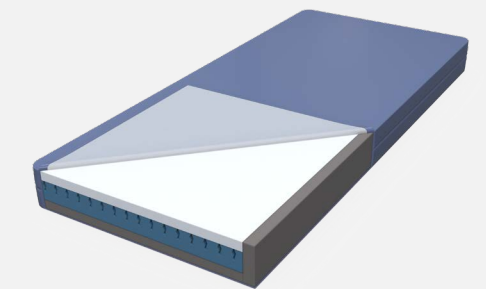
A mattress for patients with complex clinical needs requiring both pressure redistribution and behavioural environment suitability.



CR-MT-PSY-PR

premium mental  
health mattress

A higher-comfort mattress for longer-stay therapeutic and residential settings. Flame-retardant PU construction, meeting full infection control and ligature-resistance requirements.



# harvest range

The Harvest Range is the full communal specification, from dining room to waiting area. Tables, integrated seating, and waiting room chairs in LLDPE, stainless steel, and timber, built for high-use institutional environments.

## PRODUCTS IN THIS RANGE

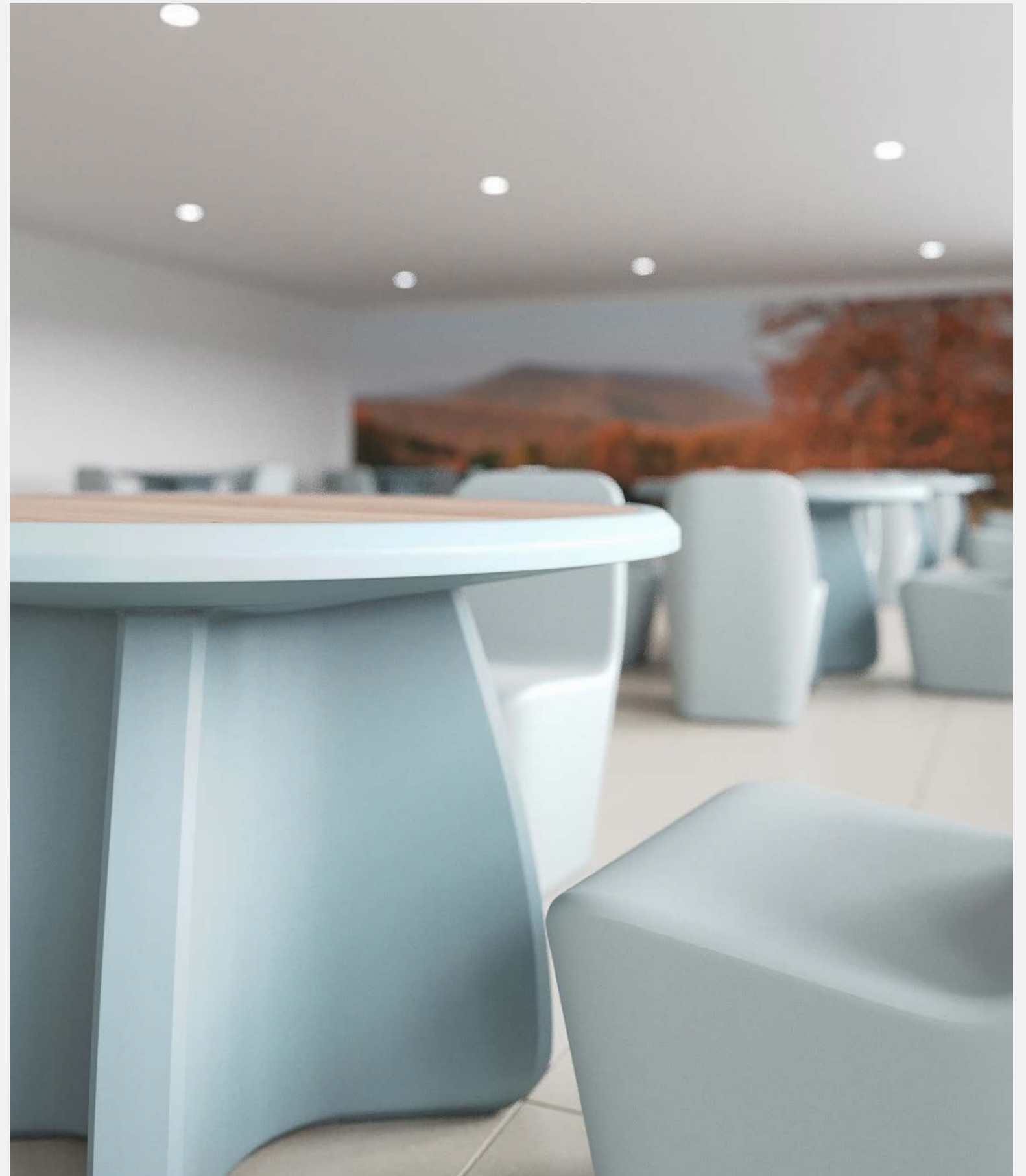
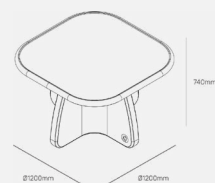
- X Base Table with Round Table Top
- X Base Table with Square Table Top
- 4 and 6 Seater Stainless Steel Dining Table
- 4 and 6 Seater Round Wood Table Top
- 4 and 6 Seater Square Wood Table Top
- 4 Seater Wooden table Round and Square
- 3 Seater Waiting Room Chair with Arms
- 3 Seater Waiting Room Chair without Arms

# x-base table

An institutional dining table with a sand-filled LLDPE X-base and round MDF laminate top. No frame underhang, tamper-resistant fixing, stable under institutional use.

CR-DRT-XS  
round table top

CR-DRT-XR  
square table top



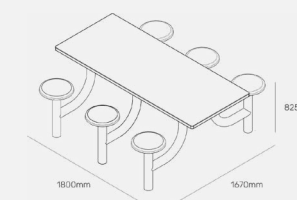
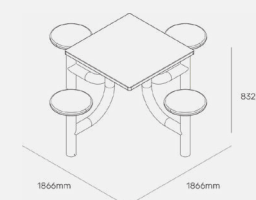


# stainless steel dining table

A stainless steel top dining table for high-security institutional environments. Reduce ligature points, no surface that degrades under institutional cleaning chemicals or physical impact.

CR-DRT-SS-4SE  
4 seater

CR-DRT-SS-6SE  
6 seater



**DINING TABLE WITH WOOD TOP**

A dining table with wooden top for psychiatric institutional environments. Two different seating options and table top configurations to accommodate different seating requirements and room configurations

CR-DWSS-4SE

4 seater round table top



CR-DRT-SS-4SE

6 seater round table top



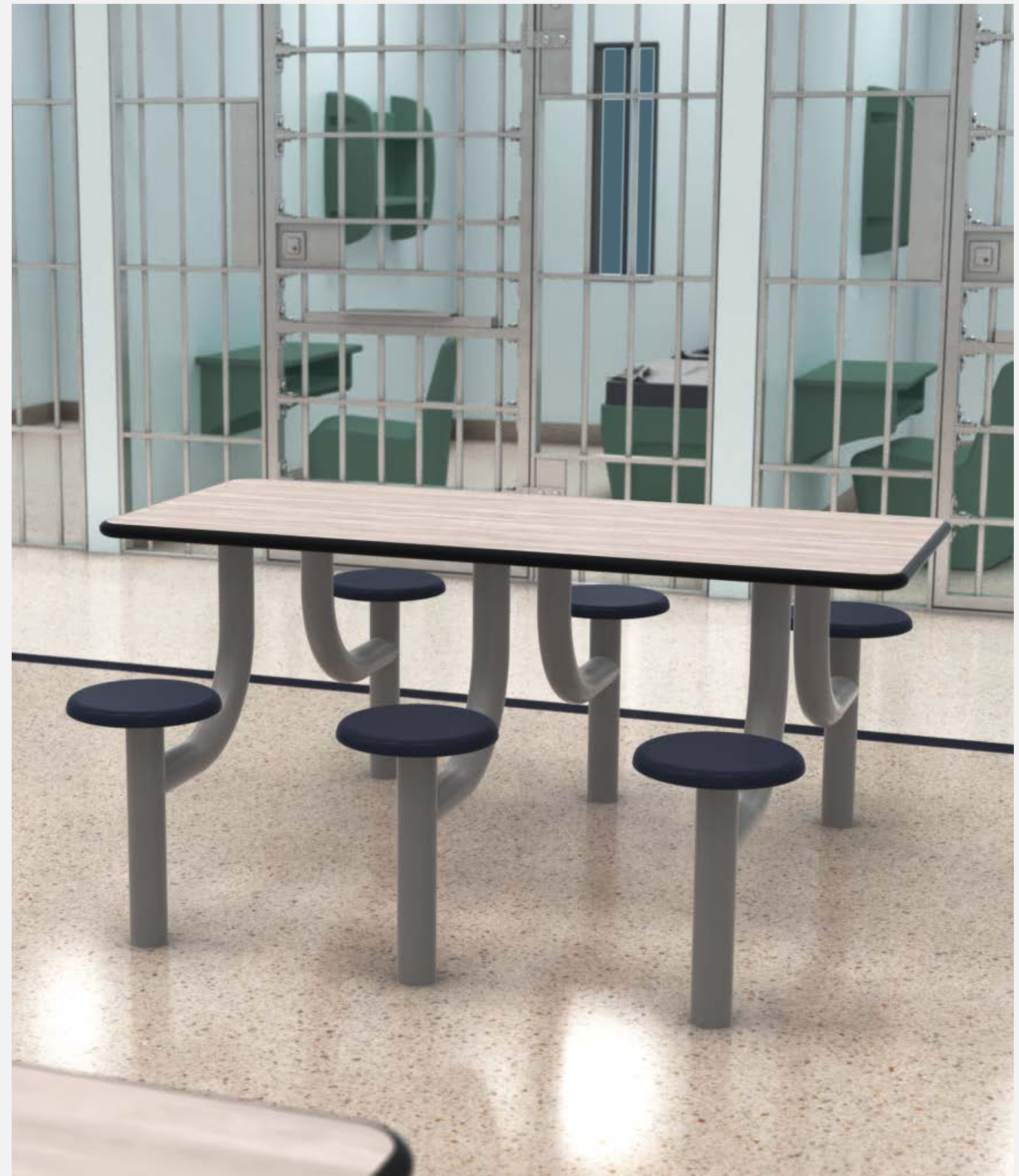
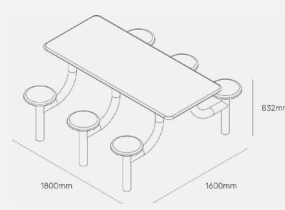
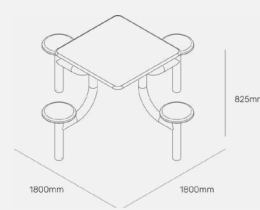
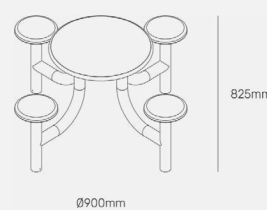
CR-DRT-SS-4SE

4 seater square table top



CR-DRT-RC-6SE

6 seater square table top



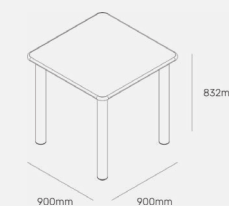
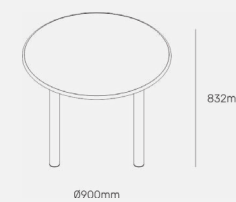


## 4 seater wooden tables

A stainless steel top dining table for high-security institutional environments. Reduce ligature points, no surface that degrades under institutional cleaning chemicals or physical impact.

CR-DRT-R  
round table top

CR-DRT-S  
square table top

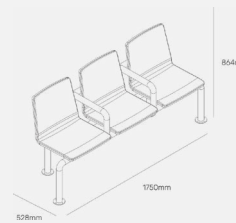
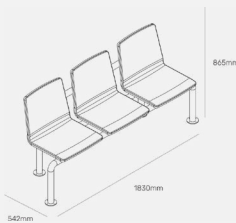


# 3 seater waiting room chair

A connected three-seat waiting unit for reception and intake environments. Anti-ligature geometry, easy-clean surfaces, built for high-access public institutional use.

**CR-WRC-3SE**  
without arms

**CR-WRC-3SE-AR**  
with arms



# soft supporting seating

Safe, institutional-grade soft seating for sensory rooms, activity rooms, and therapeutic recreational spaces. Purpose-built for care environments where comfort and containment are both required.

## PRODUCTS IN THIS RANGE

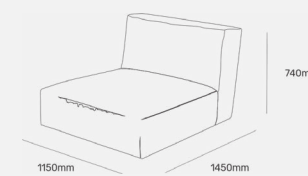
- Securasack
- Slounger Beanbag



## CR-BB-SLO

## slounger beanbag

A lounge-profile beanbag for therapeutic recreational spaces where a reclining soft seating option is required. Same institutional cover specification as the Securasack.



## CR-MT-PSY-PR

## securasack

An institutional-grade large beanbag for sensory rooms and therapeutic lounges. PU/PVC construction, weighted and stable, no exposed seams or ligature points.



# calmadillo range

In high-acuity psychiatric, behavioural, and addiction environments, what surrounds a person during de-escalation has a direct clinical effect. The Calmadillo was designed for that moment. A therapeutic rocking unit that creates a contained, calming experience without physical restraint. Built to be as robust as the environments that need it most.

## PRODUCTS IN THIS RANGE

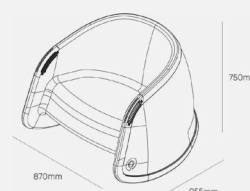
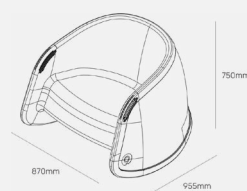
- Calmadillo
- Calmadillo with Upholstery

CR-CA  
calmadillo

A therapeutic rocking chair built for de-escalation and self-regulation environments. Robust construction rated for high-acuity use, with fully wipeable surfaces, no exposed fixings, and no ligature points throughout.

CR-CA-UPS  
with upholstery

The Calmadillo with upholstered seating surfaces, specified for longer-stay therapeutic settings where sustained comfort is a secondary clinical requirement. Replaceable upholstery panels for straightforward maintenance and ongoing hygiene compliance.



# protective accessories

Protective covers for televisions and artwork in institutional environments, removing the final hazard points so the specification holds all the way to the wall.

## PRODUCTS IN THIS RANGE

- Wooden TV Protector 43 and 55 Inch
- Artwork Protector (A4 through A00)



## wooden tv protector

A wall-mounted anti-ligature housing for 43-inch televisions in psychiatric ward and high-acuity care environments. Encloses the screen and reduces exposed fixings, eliminating a residual hazard point in otherwise fully specified rooms.



**CR-TV-43**  
43 - inches



**CR-TV-55**  
55 - inches

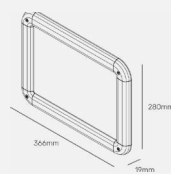


# artwork protectors

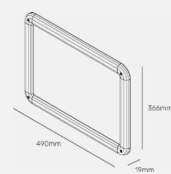
A wall-mounted anti-ligature housing for 43-inch televisions in psychiatric ward and high-acuity care environments. Encloses the screen and reduces exposed fixings, eliminating a residual hazard point in otherwise fully specified rooms.



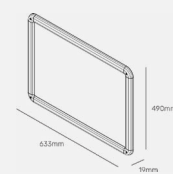
CR-AP-A4



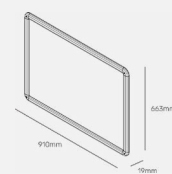
CR-AP-A3



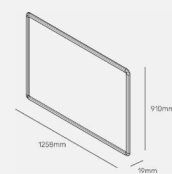
CR-AP-A2



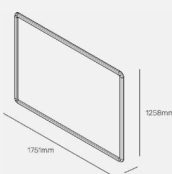
CR-AP-A1



CR-AP-A0



CR-AP-A00



## OUR COLOUR PALETTE IS DESIGNED TO SUPPORT HEALING, CALM, AND COMFORT WITHIN BEHAVIOURAL HEALTHCARE ENVIRONMENTS.

Each colour and finish is selected for the emotional and therapeutic effect it has on patients and staff, drawing from natural tones and textures rather than aesthetic trend.

Every option is considered against guidance for psychiatric and residential environments, recognising that colour, tone, and finish can meaningfully influence mood, behaviour, overstimulation, and the overall patient experience across different ward types and care settings.



# colour & finish options

# plastic colours



**BIRCH GREY**  
PL-BG



**GULL WING**  
PL-GW



**WALK AWAY**  
PL-WA



**GRANITE**  
PL-GR



**TORRES BLUE**  
PL-TB



**BASALT**  
PL-BAS



**NIGHT OUT**  
PL-NO



**BLUE CRANE**  
PL-BC



**ENDLESS SUMMER**  
PL-ES



**PEACH MELBA**  
PL-PM



**DEARLY**  
PL-DE



**HEAR ME ROAR**  
PL-HMR

# wood grains



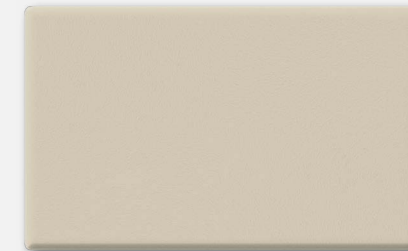
**REDWOOD CHERRY**  
TT-WG-RWC



**NORDIC OAK**  
TT-WG-NOO



**GOLDEN MAPLE**  
TT-WG-GOM



**LIGHT CAPPUCCINO**  
TT-WG-LCUP



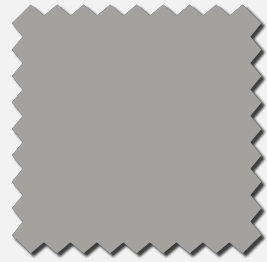
**SOFT GREY**  
TT-WH-SOG



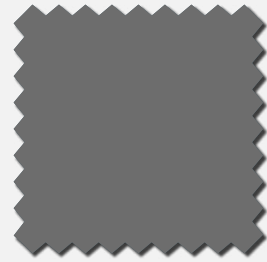
**SLATE GREY**  
TT-WG-SLG



## core colors



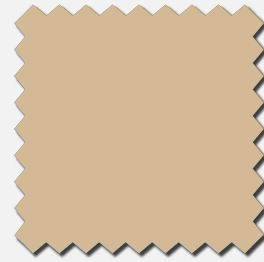
SILVER WHISPER  
UP-SIL



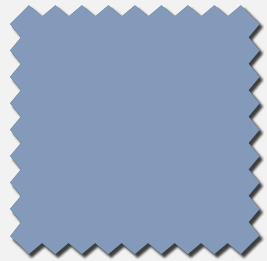
SHADOW SLATE  
UP-SHS



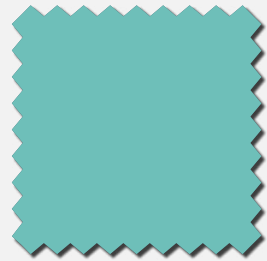
DEEP HARBOR  
UP-DHR



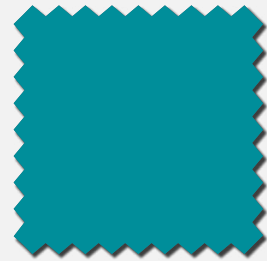
DUNE HAVEN  
UP-DHA



STORM WASH  
UP-STW



BOTANICAL BREEZE  
UP-BOB

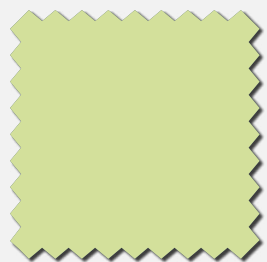


CALM TIDE  
UP-CAT

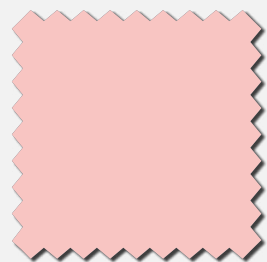


EMBER CLAY  
UP-EMC

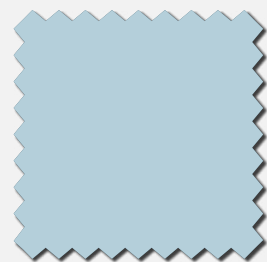
## pastel colours



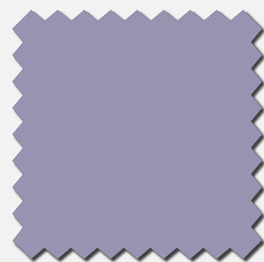
FRESH MEADOW  
UP-PFM



ROSE PETAL  
UP-PRP



SKY LIGHT  
UP-PSL



SOFT HORIZON  
UP-PSH

## upholstery textiles fiber guard



HAZE  
UP-FG-HA



SMOKE  
UP-FG-SM



BLUSH  
UP-FG-BU



PLUM  
UP-FG-PL



FEATHER  
UP-FG-FE

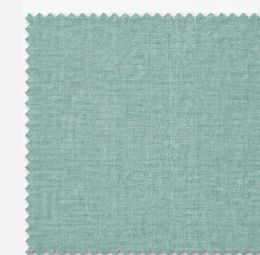


INDIGO  
UP-FG-ID

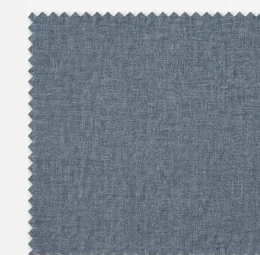
## texture colours



CELADON  
UP-TCA



SKY  
UP-TSK



HERITAGE BLUE  
UP-THB

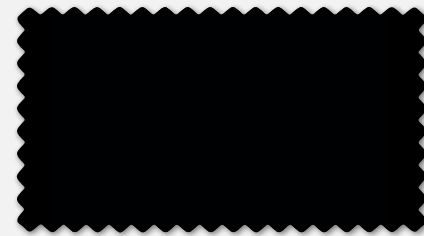


COBBLE  
UP-TCO

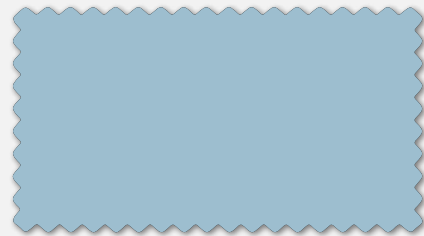
## polyurethane mattress material



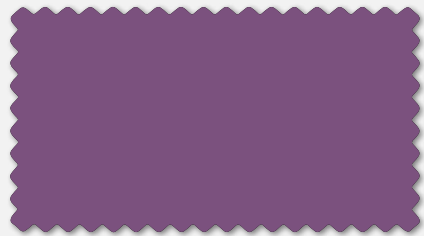
**INDIGO DEPTH**  
PU-ID



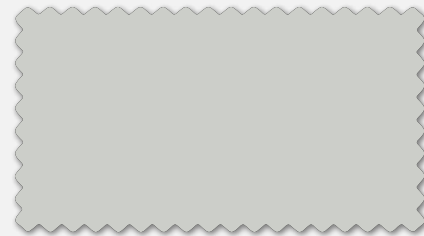
**ONYX**  
PU-OX



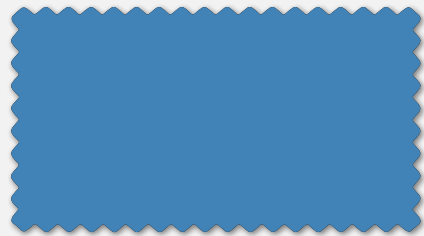
**DAYBREAK**  
PU-DB



**VIOLET CALM**  
PU-VC



**STEEL ECLIPS**  
PU-SC

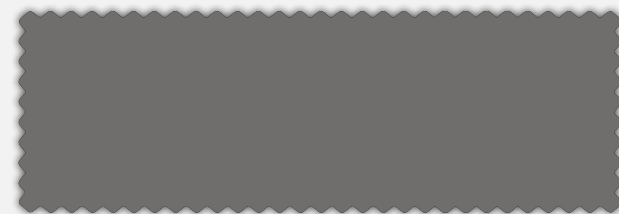


**PULSE BLUE**  
PU-PBL

## anti vandal mattress material (PVC)



**MIDNIGHT BLUE**  
CR-TRO



**RIVERSTONE GREY**  
CR-MID


## crib7





**ASHGRAIN GREY**  
C7-ASH



DESIGNED FOR ENVIROMENTS  
WHERE DETAILS MATTER

 +2710 615 0816

 info@craniumsa.co.za

 www.craniumsa.co.za

tell us about your space

